

ART EXHIBITION

Disability Recreation Unity Movement (DRUM)



Care Team of the Year 2011/12



Registered Charity No. 1044836

Parkgate Community Centre, Southwold Road
Watford Hertfordshire WD24 7DP Tel: 01923 442114
drumwatford@btinternet.com
www.drum.btck.co.uk

About Us

DRUM is a small registered charity, based in Watford, providing day services and support to over 60 adults with physical and/or sensory disabilities living in South West Hertfordshire.

DRUM is a user-led organisation, run by a management committee of disabled members and carers, supported by a small and dedicated team of part time staff and volunteers.

Some members were born with a disability however the majority have acquired a disability through a sudden accident or illness. Many rely on personal care and support from a relative or friend.

Some carers just need a couple of hours to do some shopping, meet friends or get some sleep but others may be juggling paid work with their unpaid caring responsibilities at home. DRUM provides a regular daybreak and support to over 100 unpaid carers.

Day services are currently available four days a week and DRUM is open from 9am-3pm on a Monday, Tuesday, Friday and Saturday.

Daily activity sessions are held twice a day and include sessions in art, creative crafts, textiles, ceramics, sculpture, creative writing, drama and yoga. In addition to the daily activity sessions, DRUM also provides transport, refreshments, lunches, indoor sports and games, in-house chiropodist, leisure activities and social events.



Dragon



Dragon



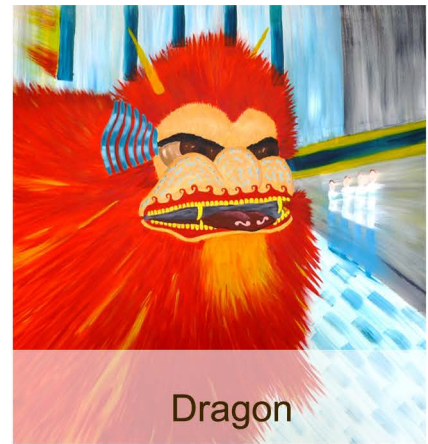
Dragon Dance is a form of traditional dance and performance in Chinese culture. It is most often seen in festive celebrations. Many Chinese often use the term "Descendants of the Dragon".



Chinese New Year's Celebration: Dragon Dance



Dragon Boat Festival



Dragon

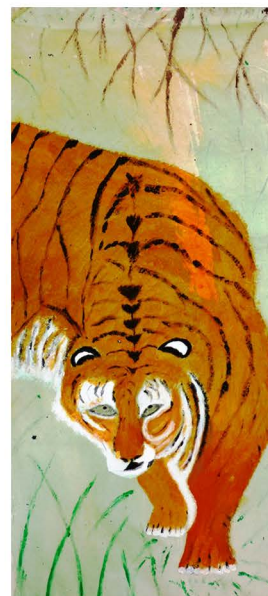
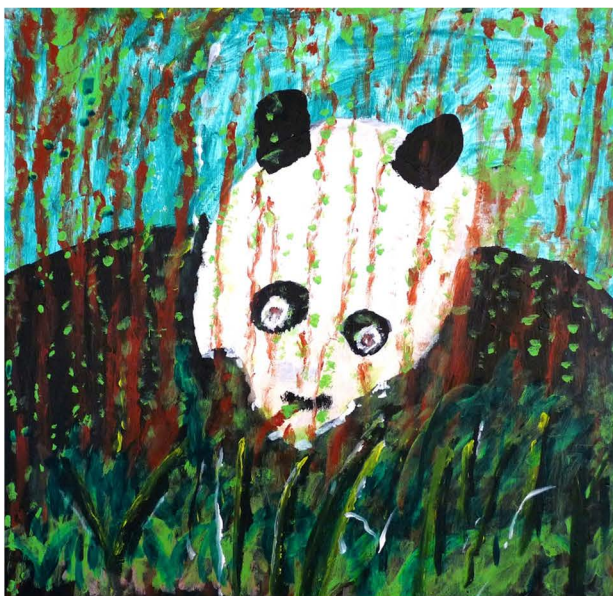


CERAMIC SESSIONS

'DRUM's latest ceramic project has proven to be quite a challenge for our members and staff. However, our talented members have more than risen to the challenge and have produced some stunning, successful work.

We began by coiling up terracotta clay and shaping it into large egg-like forms for the head which was then mounted onto a plinth. The fun really started when we began to add noses and ears. Some of the members decided that their warriors had huge, bulbous noses whilst others plumbed for a more delicate Michael Jackson 'pinched' look. Ears kept slipping up and down the heads, and changing size, but finally managed to stay put. Viva Zapata moustaches were pushed into place and plaits were twisted and squeezed onto the back of warrior's heads. The final flourish was a large scarf wrapped around the neck which also helped to keep the Warrior's head firmly in place. Overall the results are incredible and as always, we have been so impressed by the talent and passion for creativity that DRUM's members have.'





Art Session

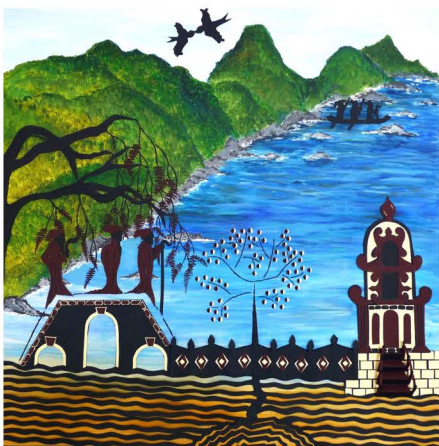
New members are often daunted by the range of vibrant artwork they see around them at DRUM, especially if they have not done any art since leaving school. We encourage them to work with their individual disabilities within the ongoing theme for the art sessions, which can be interpreted in the widest possible sense.

>>



Past themes have included Best of British, Ourselves and Others, and all aspects of Chinese and Oriental culture. The idea of having a set theme encourages members to learn about other cultures as well as to explore and express their own approach to life, especially in the light of their disabilities, and the artwork they produce reflects this, often in surprising ways.

>>



Art Session

A range of ideas is provided as a starting point and members soon find a subject that interests them personally within that theme and once they get started they realise their disability should not be a barrier. They are then encouraged to develop their own approach to the subject, and in time their confidence and enthusiasm grow and their own personal

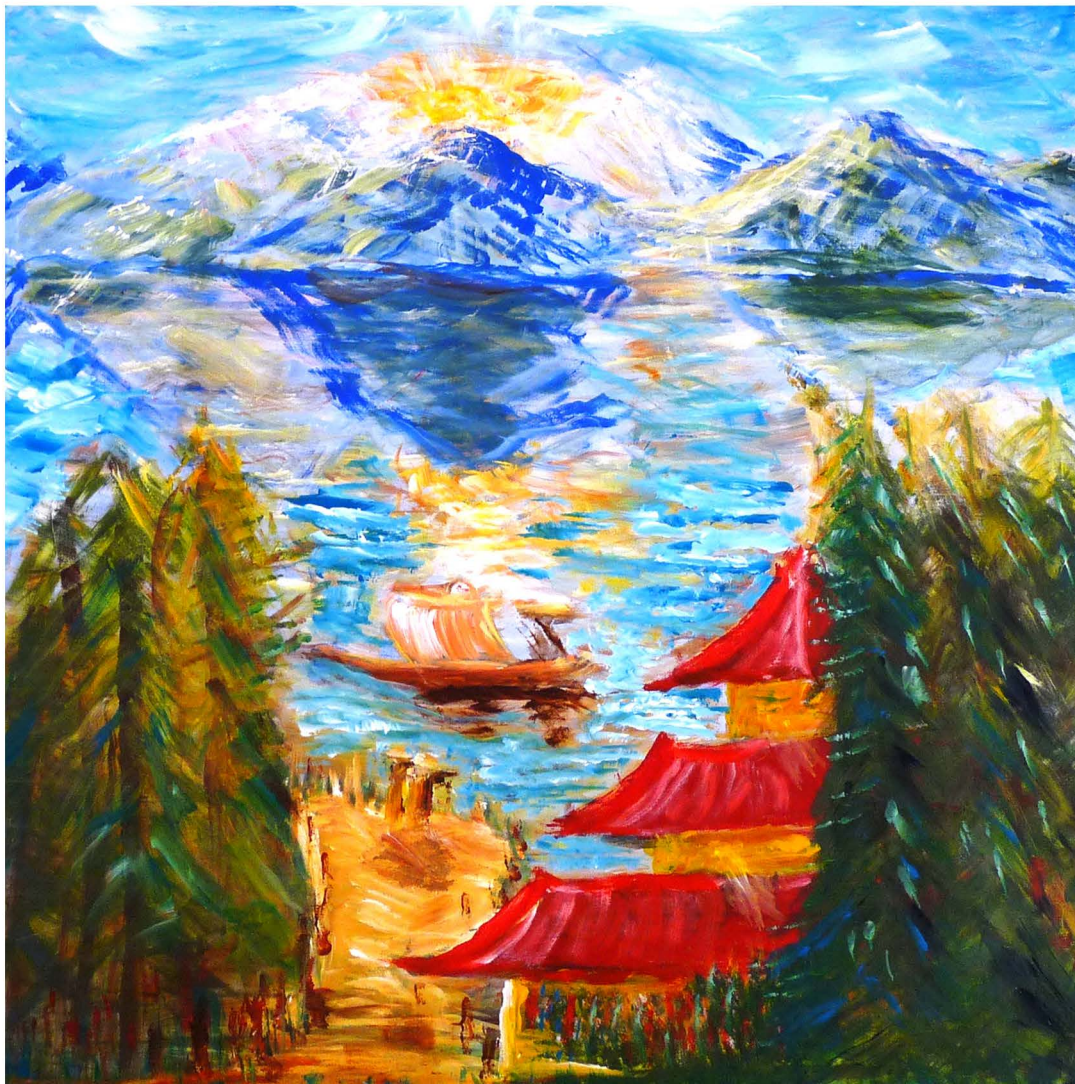
style begins to emerge. The process of creating the artwork seems to help their co-ordination and concentration as they become absorbed in the task. They find ways to deal with their disabilities, perhaps using the hand they are not used to using, and seem to develop the patience and persistence to do this. >>





Art Session

While painting and drawing are always on offer, we encourage DRUM members to expand into other creative activities, including collage, papier mache, mask-making, textile work and all related activities. Much of the work they produce is individual, but they are often involved in group projects; for instance within the current theme of China and all things Oriental they have produced paintings on fabric that will create a multi-faceted screen and have worked on a full length traditional street-style Chinese 'dragon'. They are all hugely supportive of each others' efforts.



Scenery



Beauty



龍 2012
Happy New Year



Hertfordshire County Council
Your gateway to all you need to know about Hertfordshire

YouTour LTD